

# 1460\_Sacacorchos Greymuz



## FRONT PART

45mm

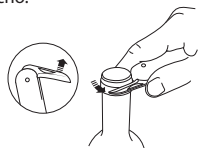
1460\_Sacacorchos Greymuz  
Manual de instrucciones (Esp)



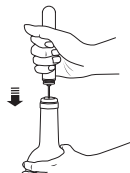
Recomendamos que lea detenidamente este manual de instrucciones y lo conserve para futuras consultas.

### MODO DE EMPLEO

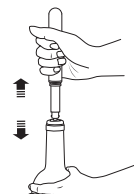
1. Utilice la cuchilla deslizante situada en el extremo del tapón para cortar el aluminio protector del corcho.



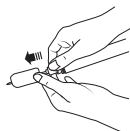
2. Inserte la aguja en el medio del corcho, asegurándose que la misma lo traspase por completo.



3. Sujete la botella firmemente con una mano, y con la otra mueva el sacacorchos hacia arriba y abajo en repetidas ocasiones, hasta que el corcho salga de la botella.



4. Empuje el corcho hacia abajo para sacarlo de la aguja.



## BACK PART

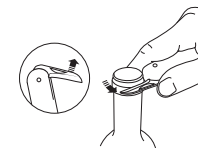
1460\_Corkscrew Greymuz  
User manual (Eng)



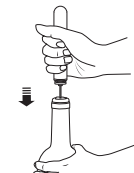
It is recommended to read this user manual carefully and keep it for future reference.

### HOW TO USE

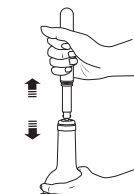
1. Use the sliding blade at the end of the stopper to cut the protective aluminium foil off the cork.



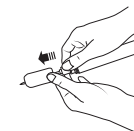
2. Insert the needle into the middle of the cork, making sure that needle has passed through completely.



3. Hold the bottle firmly with one hand, and with the other one move the corkscrew up and down repeatedly times until the cork comes out.



4. Push manually the cork down to remove it from the needle.



170mm