

MEMORY/SIM/SMART CARD READER

User's manual

Introduction

With this product, you will be able to read/write your data stored in your memory cards. With the SIM card reading capability, you can also backup your SIM card information on your PC/laptop. With the Smart card reading, you can on line bank transaction, on line shopping and to do person identification.

Features

Easy to use, compact, streamline design on its shape and lightweight
LED indicator
Compliant with USB V2.0 and USB V1.1
Rotary cover protection

Memory card support :

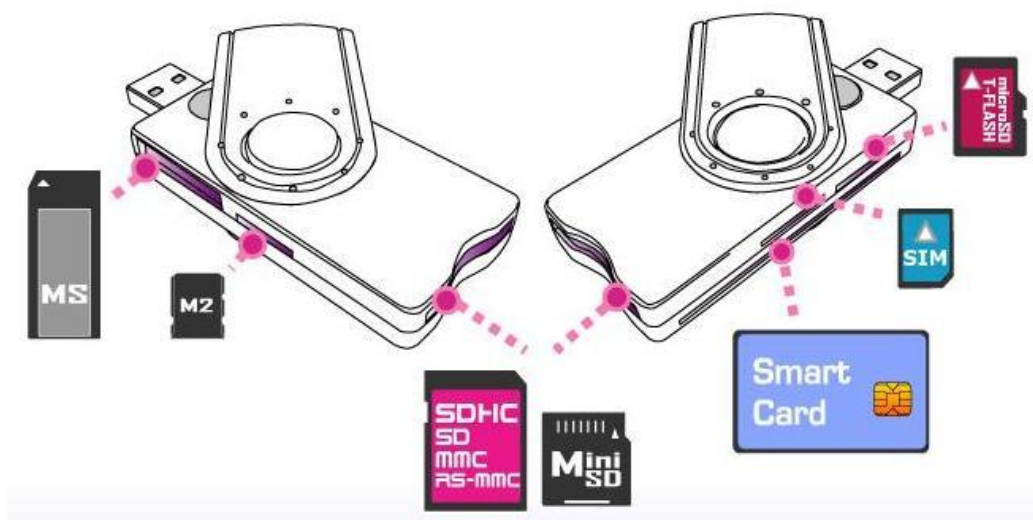
- 1) MS / MS PRO / MS DUO / MS PRO DUO / MS MG PRO / MSHG
MS MG / MS MG DUO / MS MG PRO DUO / EXTREME MS PRO /
MS SELECT / EXTREME III MS PRO / ULTRA II MS PRO /
HS MS MG PRO / HS MS MG PRO DUO / HS MS PRO /
HS MS PRO DUO / MS ROM
- 2) SD / SDHC/ EXTREME SD / EXTREME III SD / ULTRA SD / ULTRA II SD /
ULTRA II SD PLUS / SD-ULTRA-X / ULTRA SPEED SD / SD PRO /
SDHC / SD ELITE PRO / HS SD / MMC / MMC 4.0 / HS MMC /
HS RS MMC / RS MMC / RS MMC 4.0 / MMC 4.2/ MMC Mobile / MMC Plus /
mini SD / HS MINI SD
- 3) Micro SD(T-Flash)
- 4) M2
- 5) SIM
- 6) Smart Card

System requirements

Computer with USB port
Windows 2000/XP/Vista/WIN 7

Hardware installation

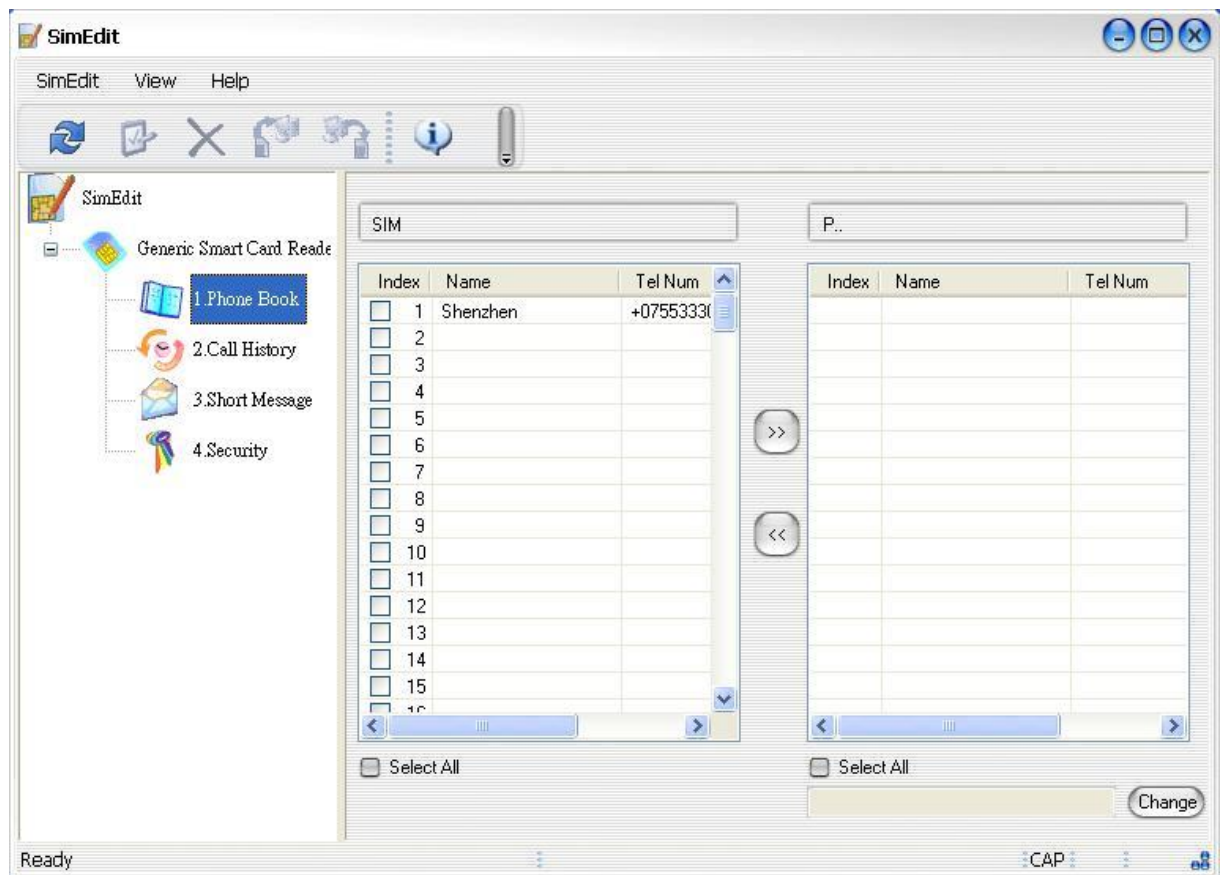
- 1) Plug memory card to each card type slot
- 2) Move USB cover and plug in the reader to USB port of PC/laptop to read/write memory card
- 3) Slots of memory card type are showed as below :



SIM software

You can access your SIM cards only with the included software. To install it, insert the CD in your CD/DVD ROM drive and click on the executable file. Follow the on-screen instructions to finish the setup.

Then, click on the « SIM Editor » icon from your desktop to launch the software.



You will be able to save or restore your SIM card information very easily with this software : contact list, messages, etc...